

# MILLMAX Vertical Turret Milling Machine

M4 Series 10x52 or 10x54 Table - 3Hp - Box Ways



[www.millmaxusa.com](http://www.millmaxusa.com)

(310) 937-4253

# STANDARD

# FEATURES

Tested Quality - ISO 9001 Certified  
3 Hp 3-Phase 220/440VAC Spindle Motors

Hard Chromed Powered Quill - Up and Down - Feed Select: 0.0015, 0.003, 0.006 in/rev

Tempered and Carburized Chrome Molybdenum Steel Spindle

NSK or Nachi ABEC-7 Angular Contact Precision Spindle Bearings

R8 or NT30 Spindle Taper - 100% Factory Test Data Provided

Ram Rotation (Deg) 90 left/right, 0-45 front/back\*, 360 Orbital

Induction Hardened & Precision Ground Table & Ways

PBC-2 Phosphor Bronze Backlash Adjustable Lead Screw Nuts

Full Length Precision Ground Gibbs with Double End Adjustments

Turcite-B X&Y Saddle Ways - Precision Hand Scraping Throughout

Widest Knee - T-Slots (3 x 0.63 x 2.48") - Way Guards - Double Travel Locks

Control Box with 110/220VAC Outlets - On/Off/E-Stop Switch Box and Indicator Light

Manual 1-Shot Lubrication System - Automatic Optional

35 Watt Halogen Work Lamp - 50 Watt Optional

Draw Bar, Tool Box With Operation Manual And Test Data

Includes Leveling Pads - Lift Eye - Rear Ram Eye

SC250 Superior Rigidity - Uniquely Structured Castings

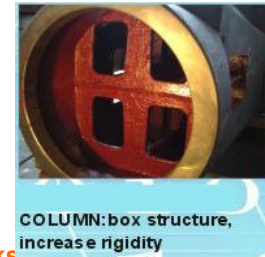
**ONE YEAR LIMITED WARRANTY**

Specifications subject to change without notice

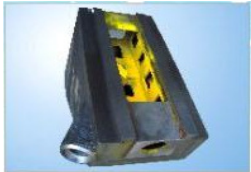
See dealer for details



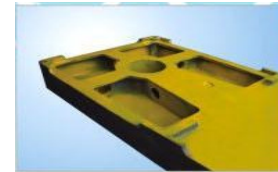
Extended Turret



COLUMN: box structure, increase rigidity



KNEE: double wall structure.



BOTTOM: box structure.

Table	Machine Travels(inch)	X	BOX WAY		Quill	RAM
			Y	Knee		
10x52	No Power Feed	34.25	16.93	16.93	5	21.65
	With Power Feed	29.53	16.93	16.93	5	21.65
10x54	No Power Feed	36.22	16.93	16.93	5	21.65
	With Power Feed	31.49	16.93	16.93	5	21.65

Base Machine Weight 3,080 Lb

Machine Dimensions 63"x69"x87"

Model # **M4-S**

16 Speed Step Pulley Spindle Head  
70 - 4620 RPM

## STOCK OPTIONS

Model # **M4-V**

Variable Speed Spindle Head  
60-4200 RPM

## UPGRADES & ACCESSORIES:

- Power Feeds
- Digital Readouts
- CNC Retrofit Kits
- 50 Watt Halogen H3 Work Lamp
- Coolant System With Chip Pan
- Auto Lube System
- Power Drawbar
- NT30, NT40 Spindle Tapers
- Vices, Collet and Clamping Kits
- Safety Hand Wheels
- Cutter Shields



Established in 1986 in Hong Kong, Kin Ah Industries has expanded to a group of four machine tool manufacturing facilities in China including two foundries covering over 100 acres and 60,000 square meters of floorspace. A fully family owned and operated manufacturing group, Kin Ah manufactures Manual Milling Machines under the Jinpu label and CNC Machines under the SAN label. Core capabilities include Iron Casting, Heat Treatment, Machining, and Precision Assembly. Products include Vertical Turret Milling Machines, Bed Type Milling Machines, CNC Milling Machines, Machining Centers, CNC Lathes, EDM and Accessories.

Imported Exclusively For:

**CAN-DO** Machinery, Measurement Systems, Tools & Accessories  
**MACHINERY SALES**

P.O. Box 3071 - 9728 Variel Ave. - Chatsworth, CA 91311

Toll Free: (800) 532-2636 • Phone: (818) 727-0957 • Fax: (818) 727-1073

<http://www.candomachinery.com/Mills.html#jinpu>

[sales@candomachinery.com](mailto:sales@candomachinery.com)